

Moshidraw 2014

www.moshidraw.com

Copyright Moshisoft

+86-635-8961024

Moshidraw Index

- [New function](#)
- [Main window](#)
- [Function](#)
- [Fast start](#)
- [Advanced use](#)
- **New hardware**
- [A board](#)
- [A board connect](#)
- [MS10105 board](#)
- [6.5 board](#)
- [Power LED](#)
- [Moshisoft](#)

New Function

- [Video Position](#)
- [Vertex adsorption](#)
- [Auto Closed](#)
- [USB signal reconnect](#)
- [Connect motor driver](#)
- [Power LED control Laser power](#)

A boards



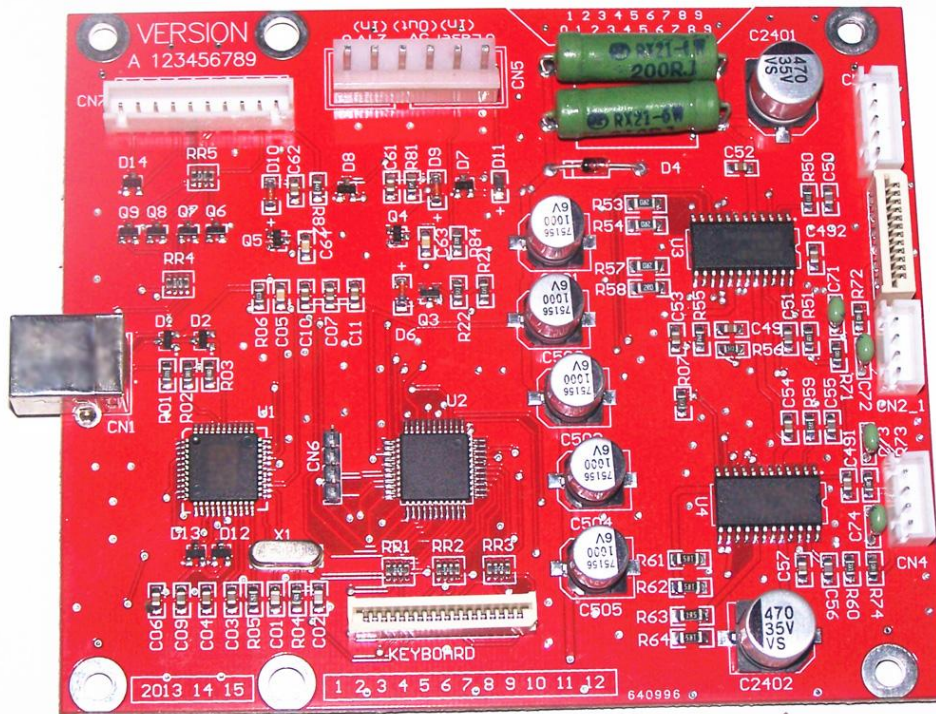
A boards

Support keyboard

Support other motor driver

Support USB Reconnect

Have motor drive IC



www.moshidraw.com

Tel: +86-635-8961024

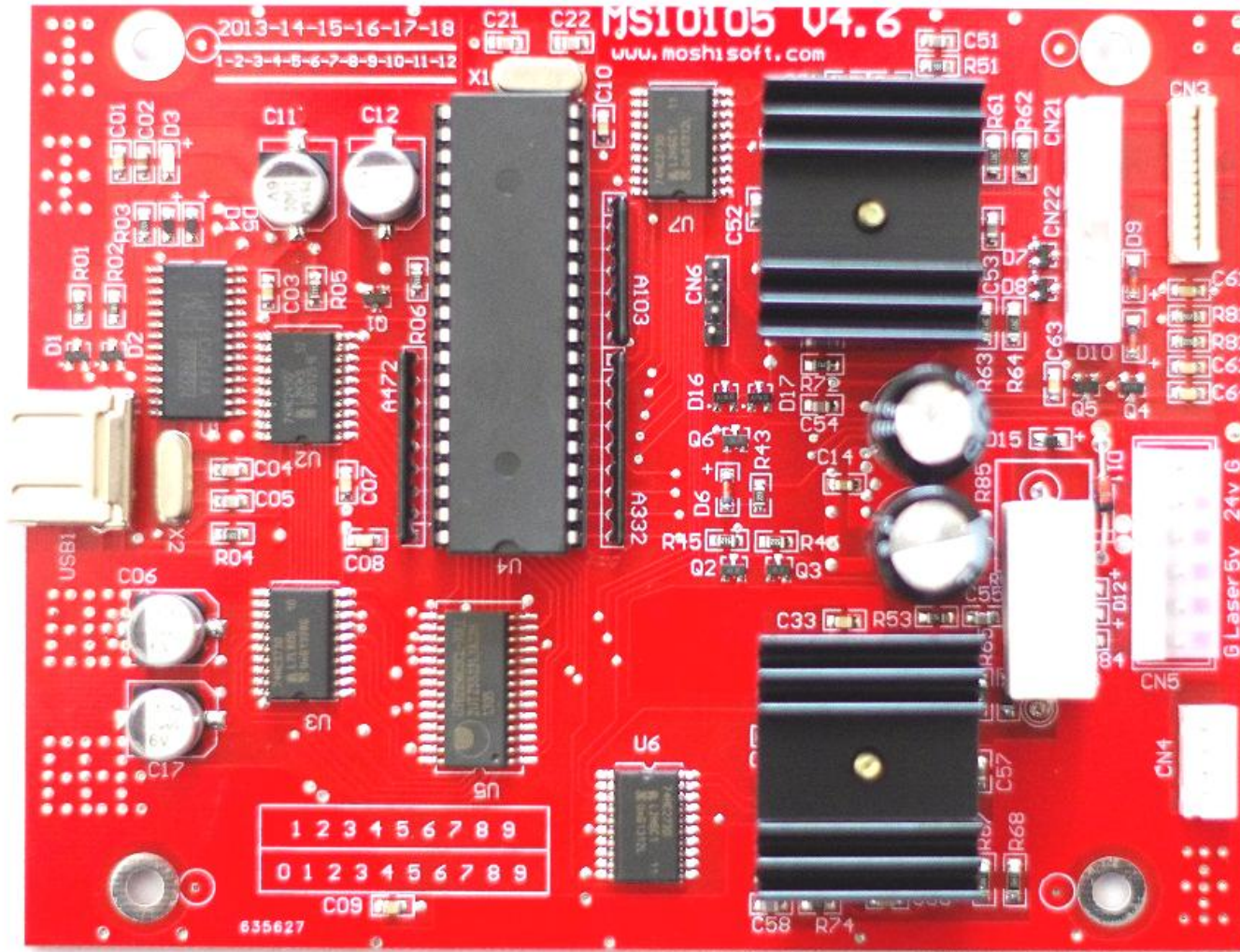
A boards connect



MS10105 board

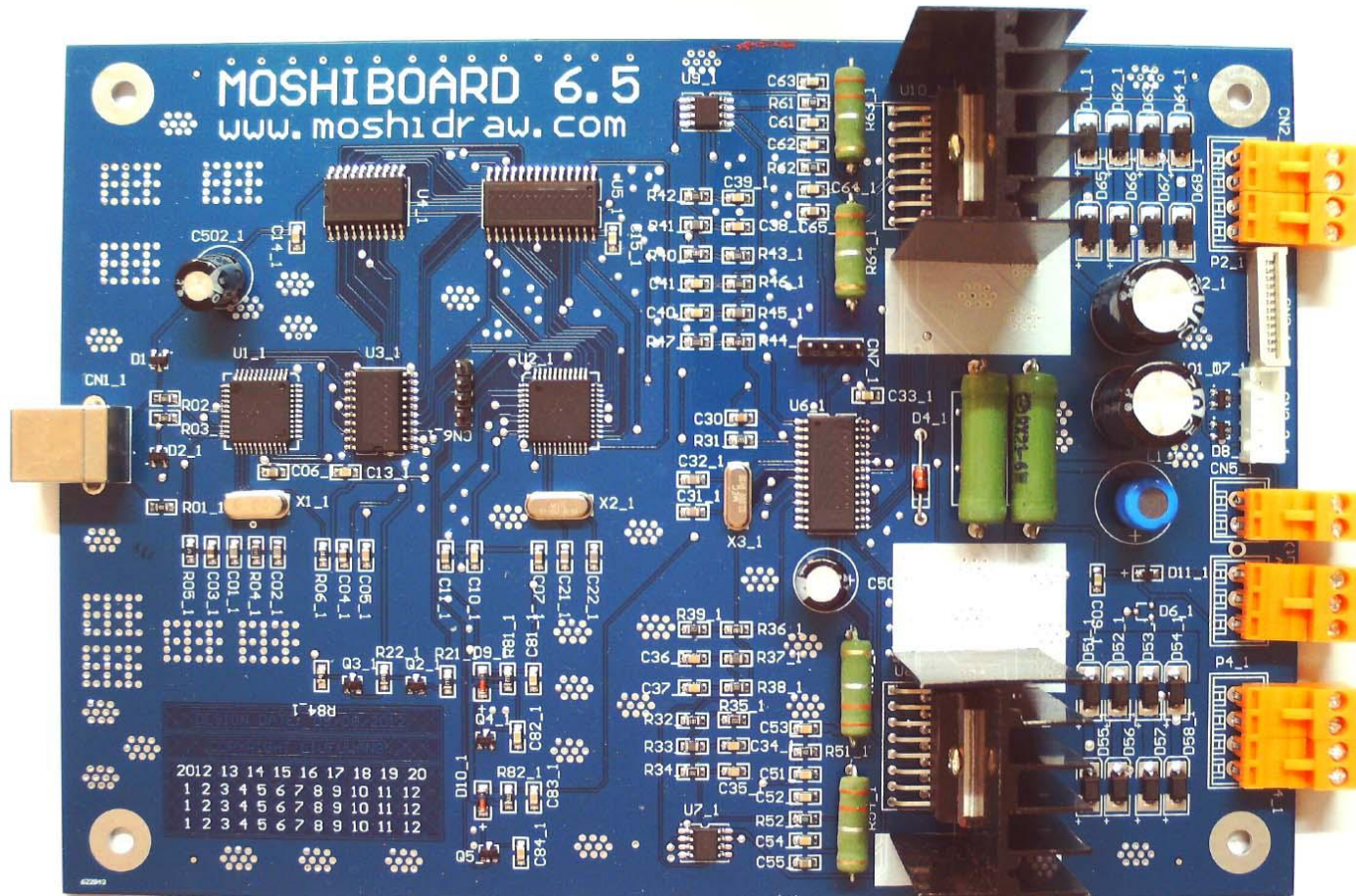
TEL: +86-0635-8961024

Store: <http://www.aliexpress.com/store/405639>

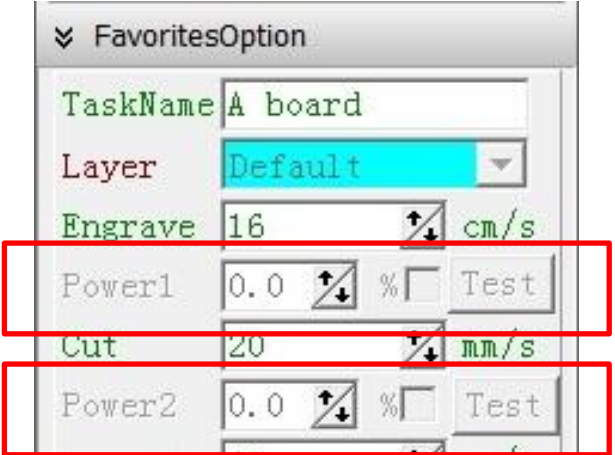
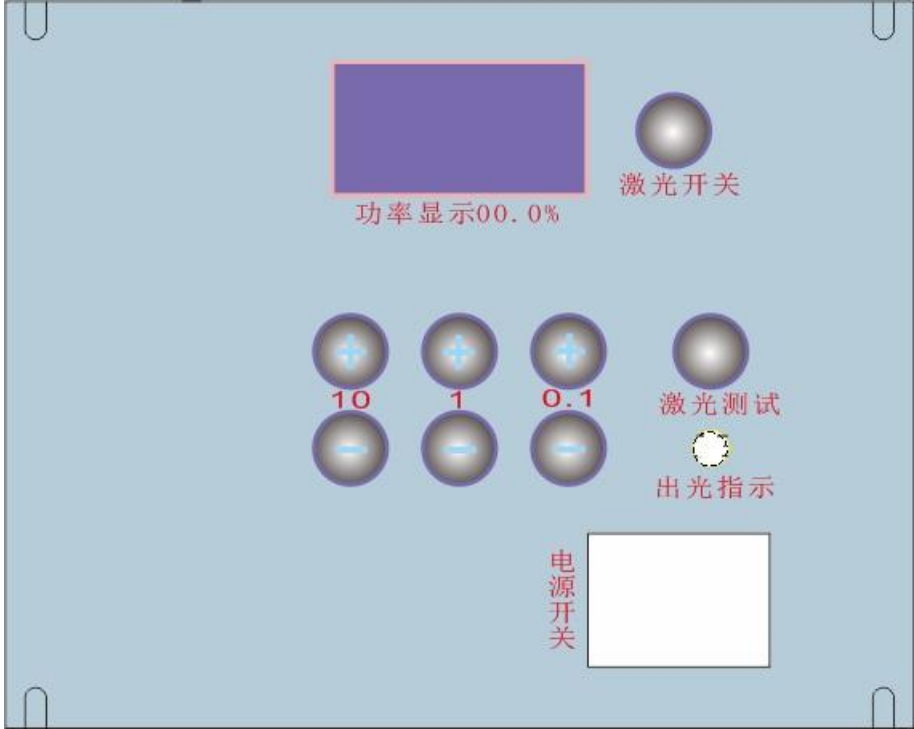
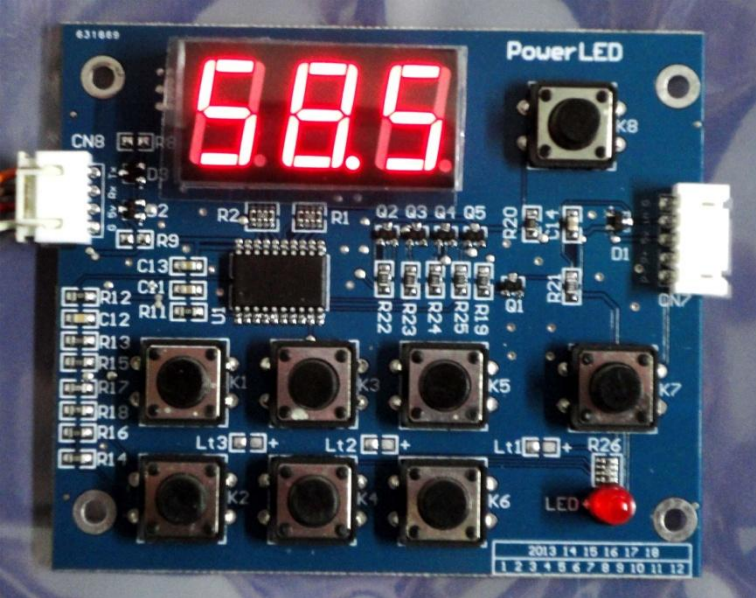


6.5 board

Tel:+86-0635-8961024



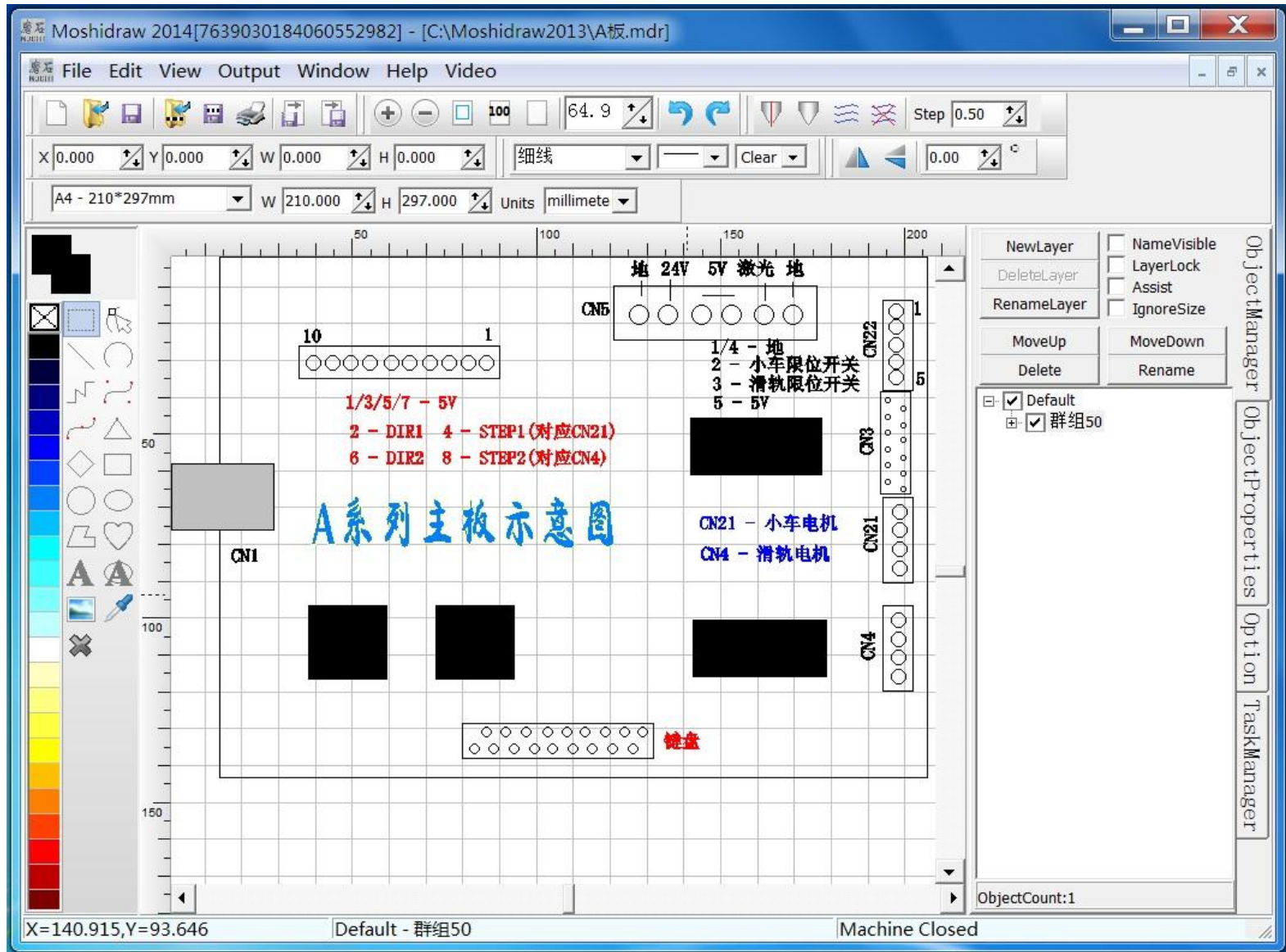
PowerLED



Connect LaserPower, limit(0-100%)

Moshidraw can set LaserPower value

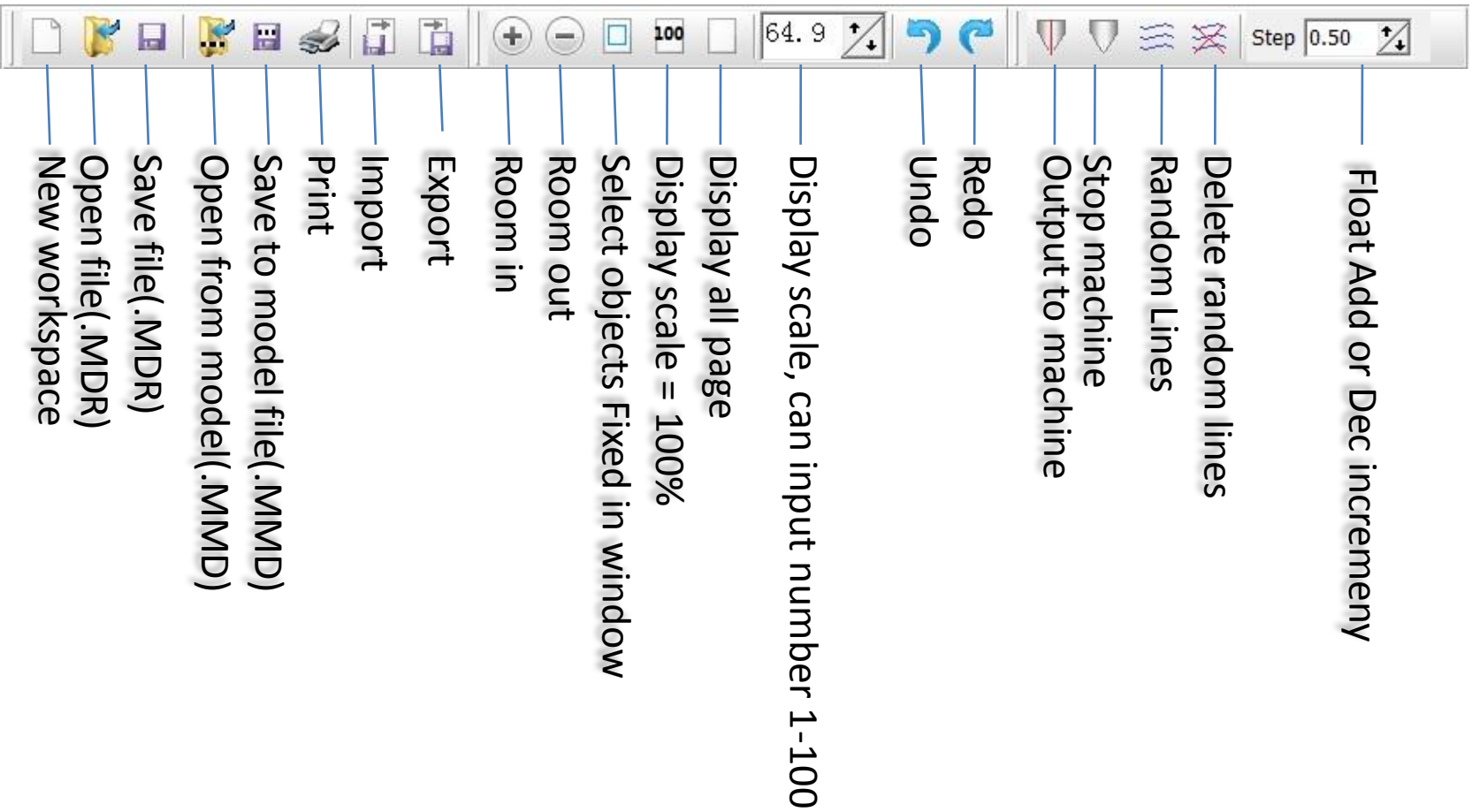
Main window



Function

- **Support a lot windows at same time**
- **Can output selected objects or current layer**
- **Object place to any layer, may create,lock,delete,edit.**
- **Automatic resize objects for custom size when output to machine. Don't need resize the objects.**

Tools



Select objects Tools



Horizontal of center

Vertical of center

Width

Height

Line width

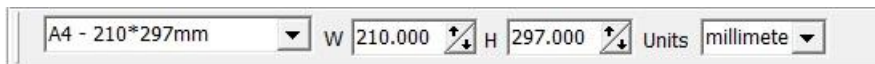
Pen Style

Brush Style

Horizontal turn over

Vertical turn over

Degrees



Page type

Width

Height

Current units

Set none
color, use
mouse's
right
button for
line color,
use
mouse's
left
button for
fill color

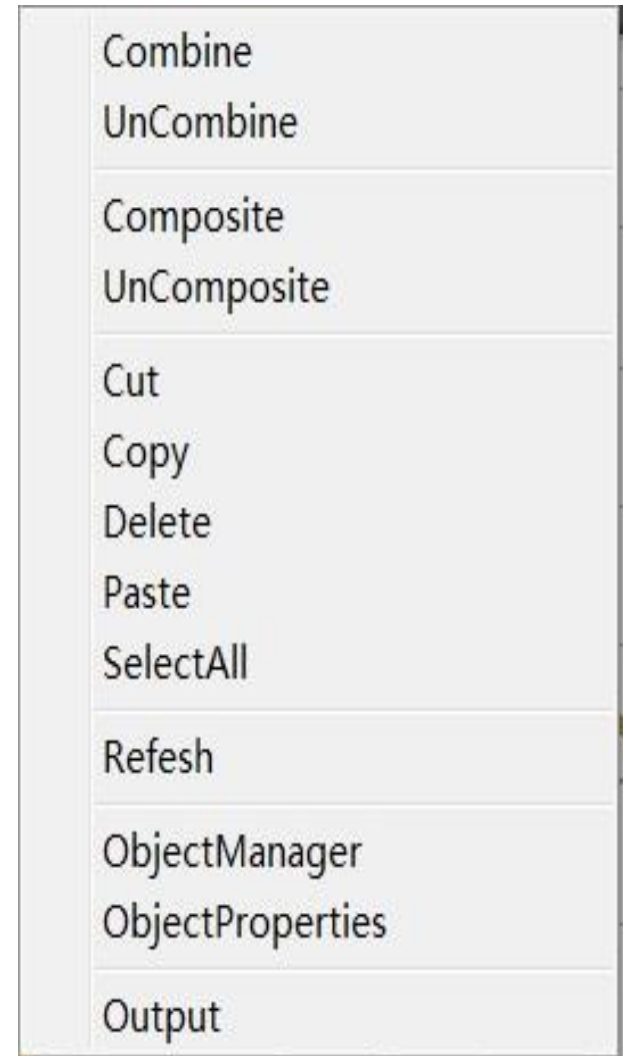
Color block

- Line color, use right button of mouse click color block
- Fill color, use left button of mouse click color block
- Select objects without edit
- Select objects and Resize
- Line
- ARC
- Polyline
- Bezier
- Spline
- Rhombus
- Rectangle
- Circle
- Ellipse
- Polygon
- Bezierto
- Text
- Ellipse text
- Add image
- Get color of page or object
- Clear all

TriangleTop
TriangleBottom
TriangleLeft
TriangleRight
Cancel

Right button menu

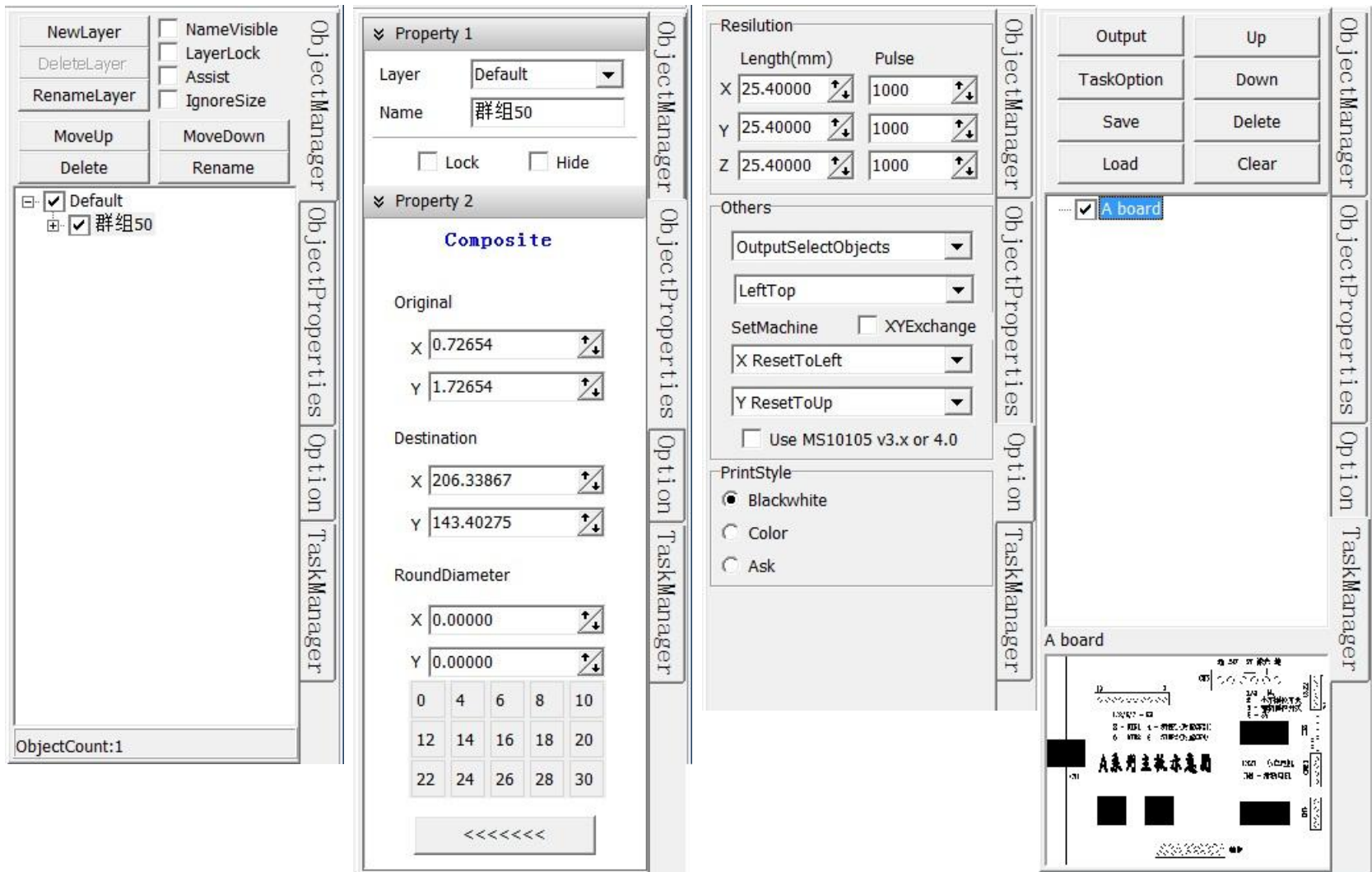
- Combine:create new object with selected objects,and delete selected object.
- Uncombreak polyline with new pointbine.
- Composite:put selecte objects to a 'Composite' object.
- UnComposite:put objects of 'Compisite' to page
- Cut,Copy,Delete,Paste,SelectAll,Refrsh: normal operation
- Objectmanager:Browse objects
- ObjectProperties:display object's properties at right of window.
- Output: Output selected object or layer to machine.



Right button menu

- Create outline from image




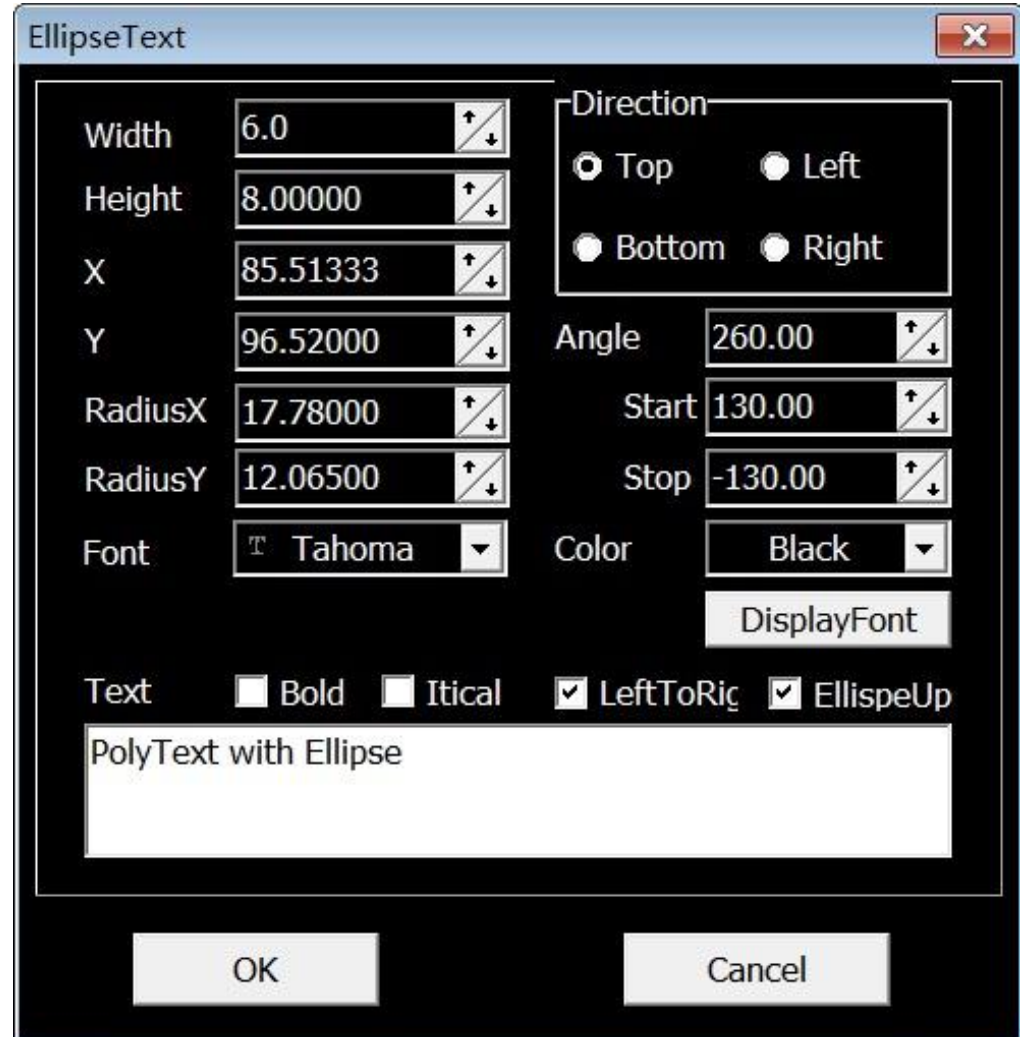


Align right label:ObjectManager,Properties,Option,Taskmanager

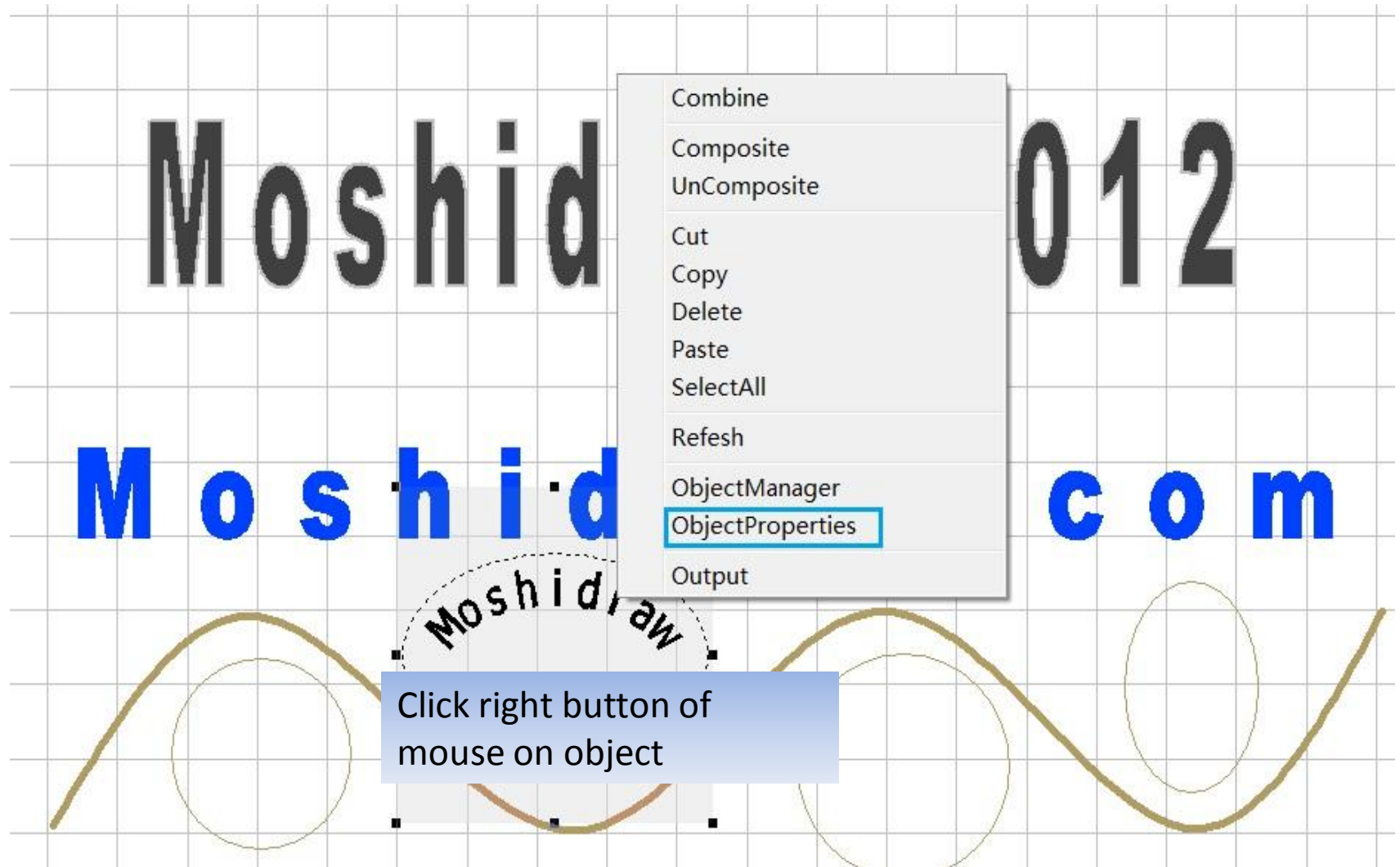
Ellipse text

Add Ellipse text

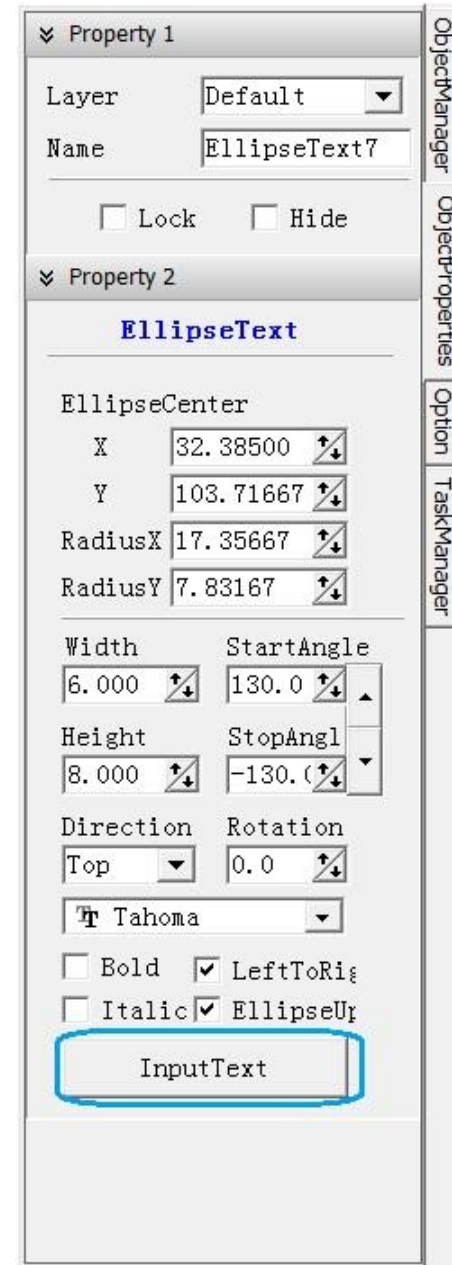
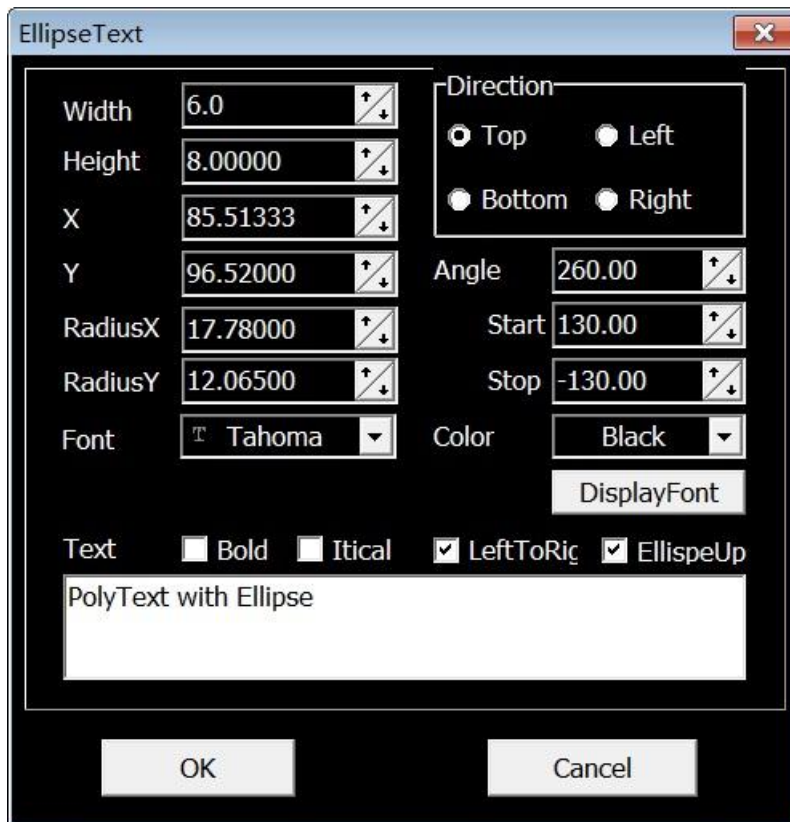
1. Click tool - 
2. Click left button of mouse in page
3. Move mouse
4. Custom size, click left button of mouse again



Ellipse text edit



Click button 'InputText' to edit text and all properties.
modify and click button 'OK'.



Fast star

- Option
- Add object
- Output
- Hot key(Mouse and keyboard)
- Support file type

Option

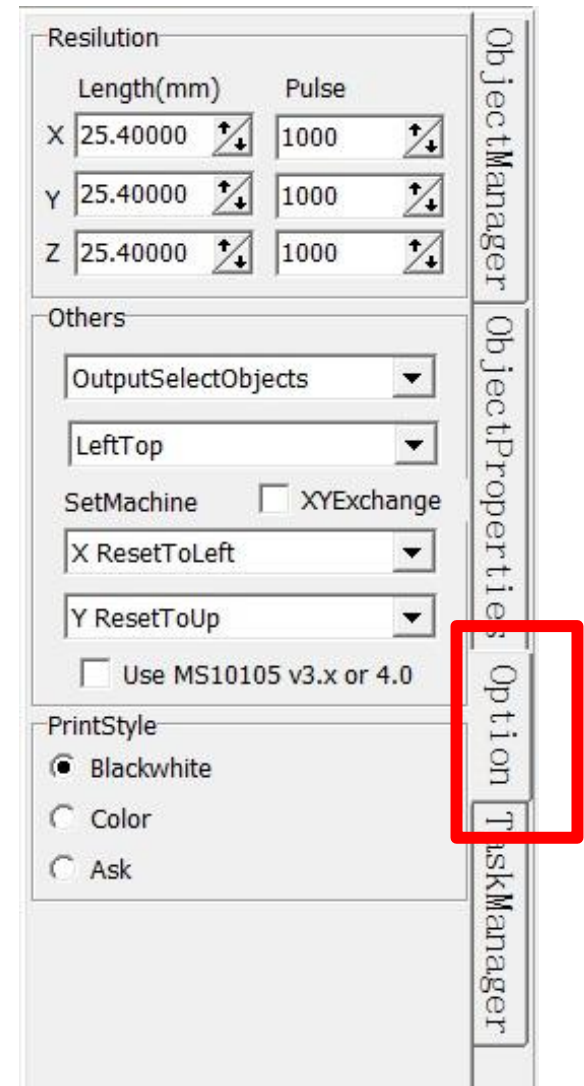
- Resilution: unit of machine
How many pulse in custom length
1 inch = 25.4mm
1000DPI= 1000 pulse/ 1 inch

PintStyle

BlackWhite

Color

Ask when print object

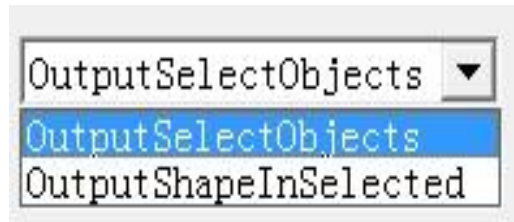


Option

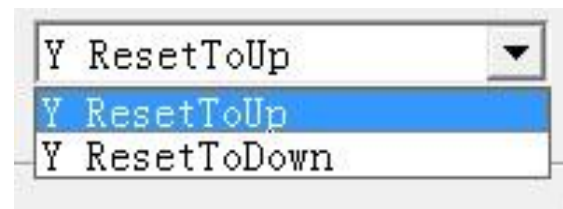
Set output default

OutputselectObject: Output selected objects to machine only.

OutputShapeInSelected: Output to machine in shap with selected objects.




Set the machine's default option when reset

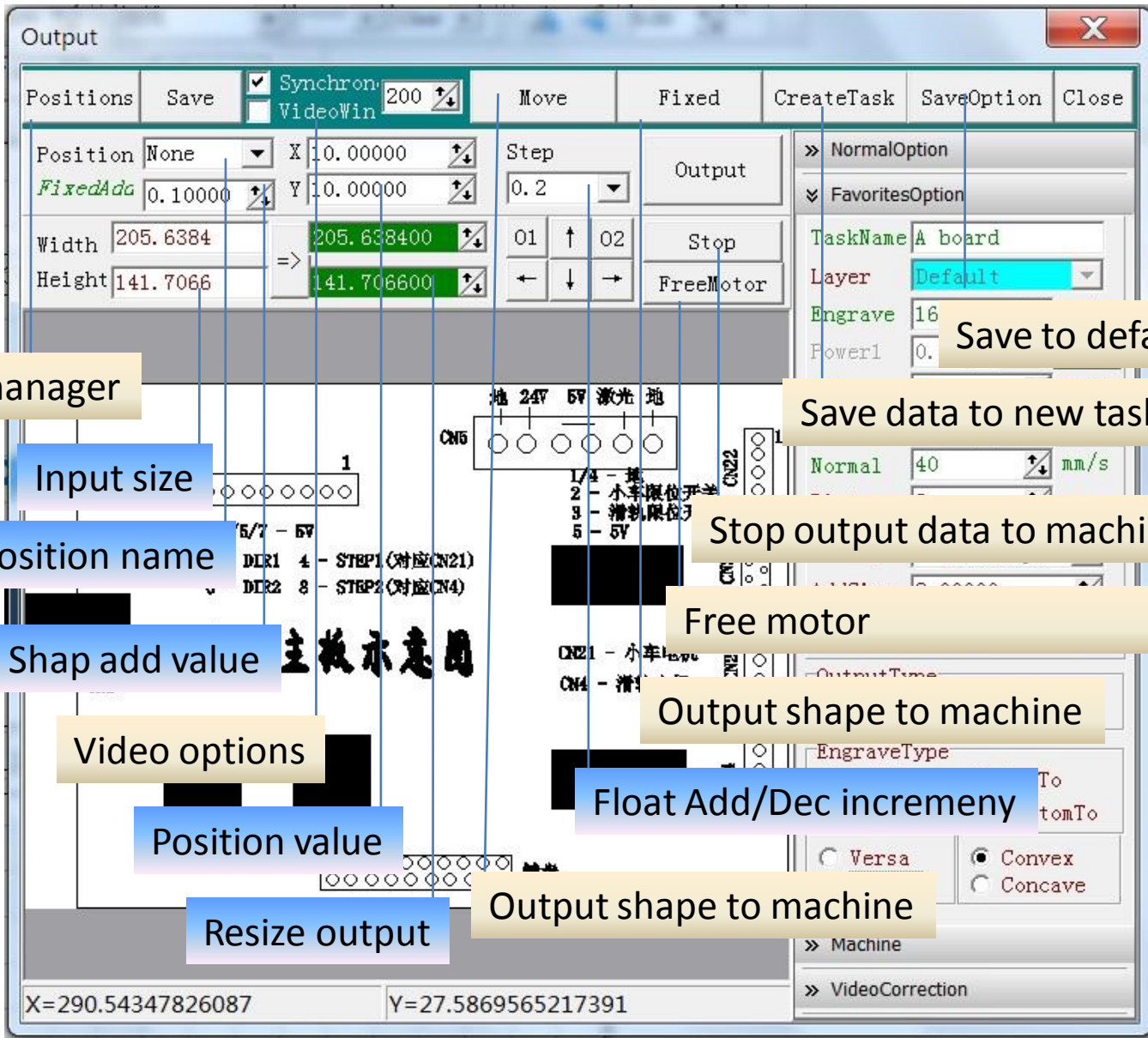


Add object

- Click tool button at window left
 - Move mouse to page
 - Click left button of mouse
 - Move mouse to resize
 - Click left button of mouse if it is custom size
- Click right button of mouse to finally if draw Polyline, Polygon, Bezier, Spline
- Add 'Assist line', Click down left button of mouse on the ruler, drop to page, up button of mouse.
- 'Assist line' is display only.**

Output

- Select objects, use page when not selected object
- Click button 
- Display output window



Positions manager

Input size

Select position name

Shap add value

Video options

Position value

Resize output

Save to default option

Save data to new task

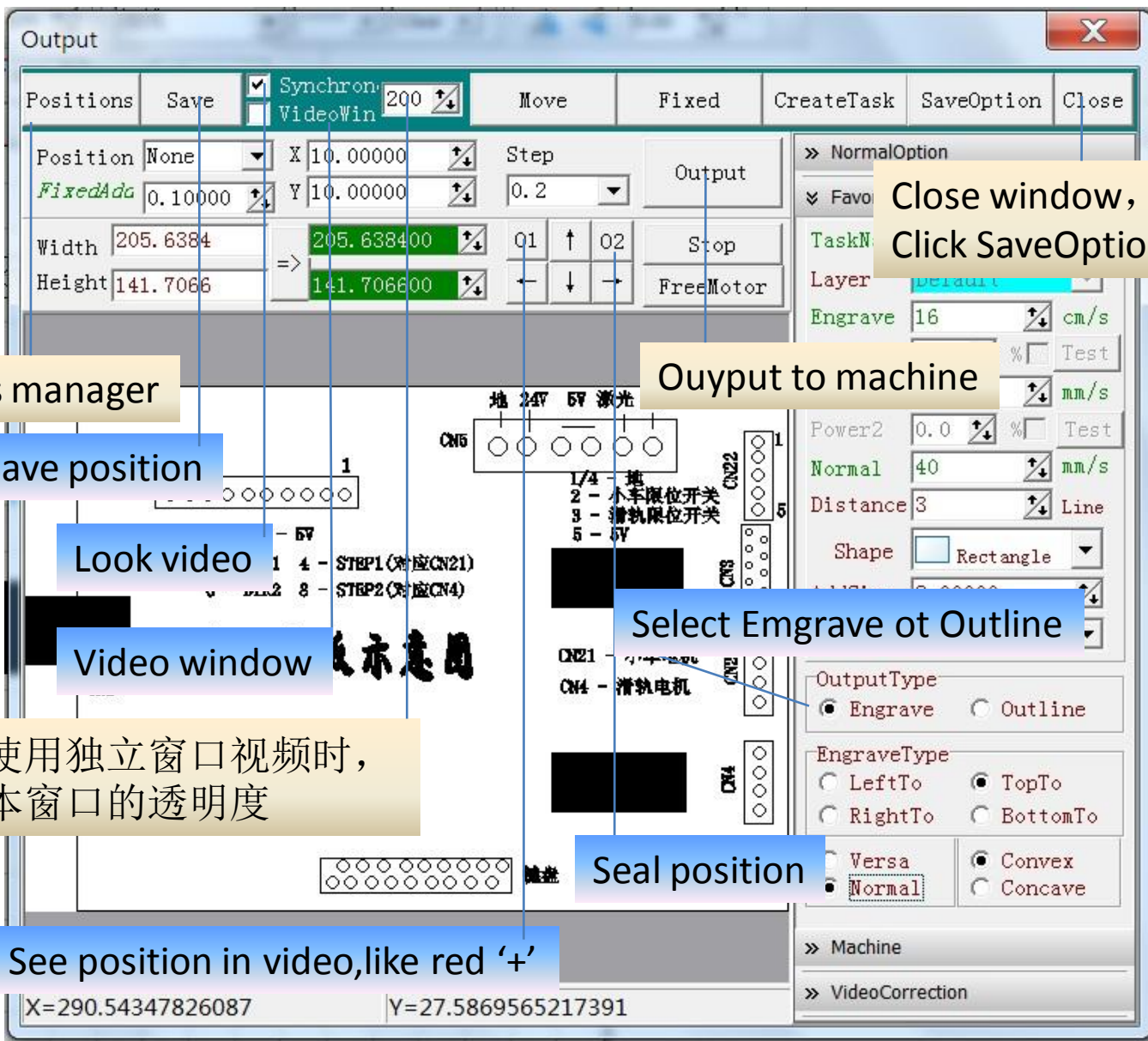
Stop output data to machine

Free motor

Output shape to machine

Float Add/Dec incremeny

Output shape to machine



Output

Positions Save Synchron VideoWin 200 Move Fixed CreateTask SaveOption Close

Position None X 10.0000 Step Output
FixedAdd 0.10000 Y 10.0000 0.2

Width 205.6384 => 205.638400 01 ↑ 02 Stop
 Height 141.7066 => 141.706600 ← ↓ → FreeMotor

地 24V 5V 激光地

10
 ○○○○○○○○

1/3/5/7 - 5V
 2 - DIR1 4 - STEP1 (对应CN21)
 6 - DIR2 8 - STEP2 (对应CN4)

车电机
 电机

CN3
 ○○○○○○

CN1
 ○○○○○○

CN4
 ○○○○○○

Set position value if click mouse left button

Display set position if move mouse on it

Position value at mouse move

X=290.54347826087 Y=27.5869565217391

» NormalOption

» FavoritesOption

TaskName A board

Layer Default

Engrave 16 cm/s

Power1 0.0 % Test

Cut 20 mm/s

Power2 0.0 % Test

Normal 40 mm/s

Distance 3 Line

Shape Rectangle

AddSize 2.00000

OverRun Reset

OutputType
 Engrave Outline

EngraveType
 LeftTo TopTo
 RightTo BottomTo

Versa Convex
 Normal Concave

» Machine

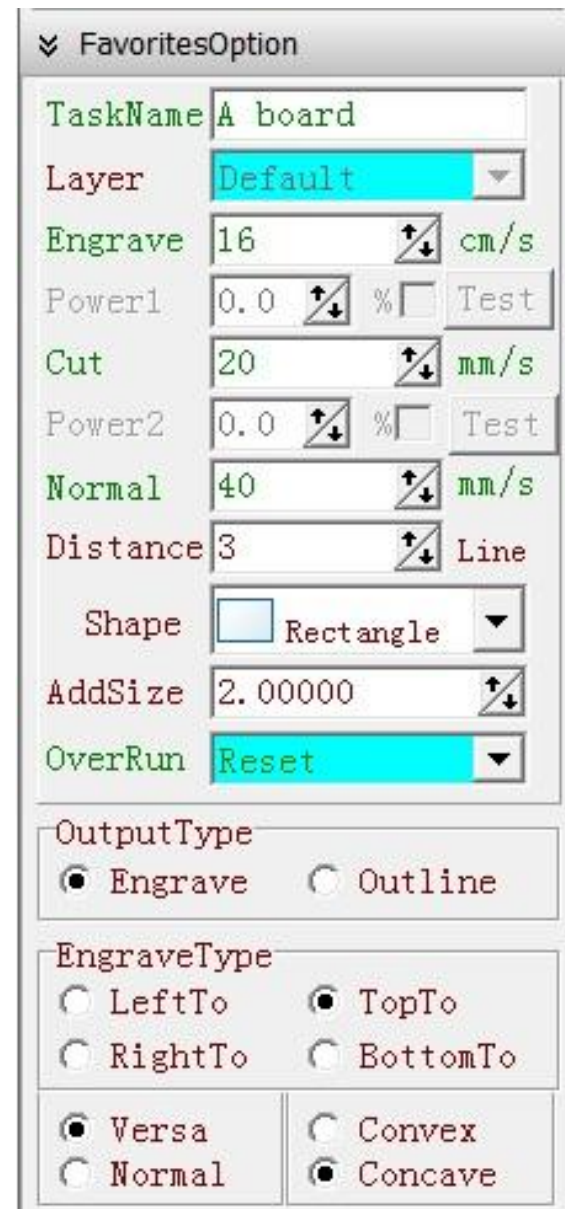
» VideoCorrection

TaskName: edit it if create task
Layer: objects on layer
Engrave: engrave speed(cm/s)
Power1: Laser power when engrave
Cut: cut speed(mm/s)
Power2: Laser power when cut
Distance: space size when engrave
Shape: shape of engrave
Addsize: add size with shape of engrave
OverRun: todo work when running over

OutputType

Engrave

Outline = Cut



FavoritesOption
 TaskName: A board
 Layer: Default
 Engrave: 16 cm/s
 Power1: 0.0 % Test
 Cut: 20 mm/s
 Power2: 0.0 % Test
 Normal: 40 mm/s
 Distance: 3 Line
 Shape: Rectangle
 AddSize: 2.00000
 OverRun: Reset
 OutputType: Engrave Outline
 EngraveType: LeftTo TopTo RightTo BottomTo
 Versa Convex
 Normal Concave

Hot key(Mouse and keyboard)

- Mouse operation in editing


- 1.Scroll page up/down: wheel up or down

- 2.Scroll page left/right: Ctrl + wheel up or down

Note: button on wheel exchange 1 and 2

- 3.Room in/out: Alt + wheel up or down

Need click Enter when input number in scale edit

- 4.Display object's name in status  X=44.027mm,Y=43.603mm Default - Text1+Fill

- 5.Select more object: Shift + left button of mouse

- 6.Select a object in composite: Ctrl + left button of mouse

- 7.Select rectangle: Click down left button , drop , up left button; select the objects in rectangle.

- Ctrl + N : New page
- Ctrl + O : Open file
- Ctrl + S : Save to file
- Ctrl + I : Import file
- Ctrl + E : Export to file
- Ctrl + P : Print
- Ctrl + Q : Exit
- Ctrl + Z : Undo
- Ctrl + Shift + Z : Redo
- Ctrl + X : Cut
- Ctrl + C : Copy
- Ctrl + V : Paste
- Delete objects: select object, use key 'Delete' in keyboard
- Ctrl + A : Select all objects in current layer

Support file type

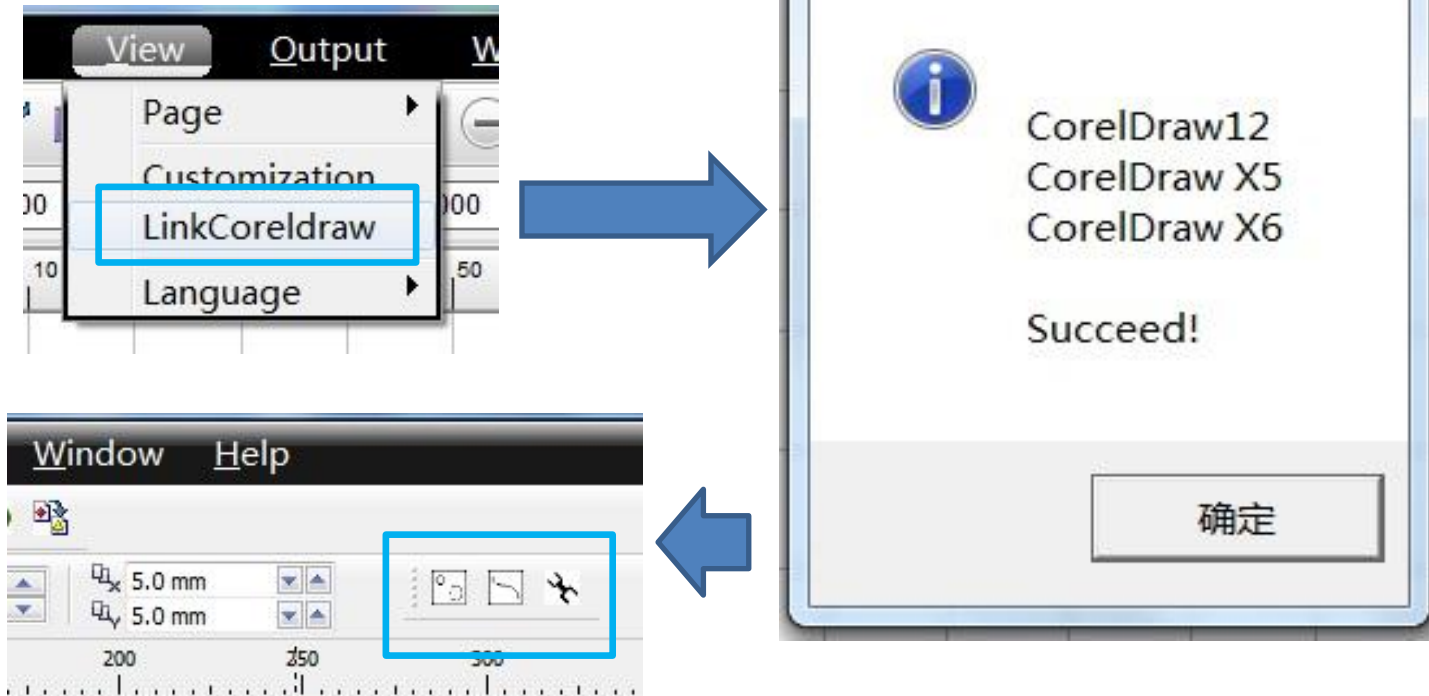
- MDR - Moshidraw 2012 file
- MMD – Moshidrfaw 2012 model file
- AI - Adobe Illustrator 8 (lines)
- DXF - AUTOCAD R12/R13/R14(lines)
- PLT - HPGL Plotter(2D)
- BMP - Windows Bitmap
- JPG - JPEG Bitmap
- EMF - Enhanced windows Metafile
- WMF - Windows Metafile

Advanced use

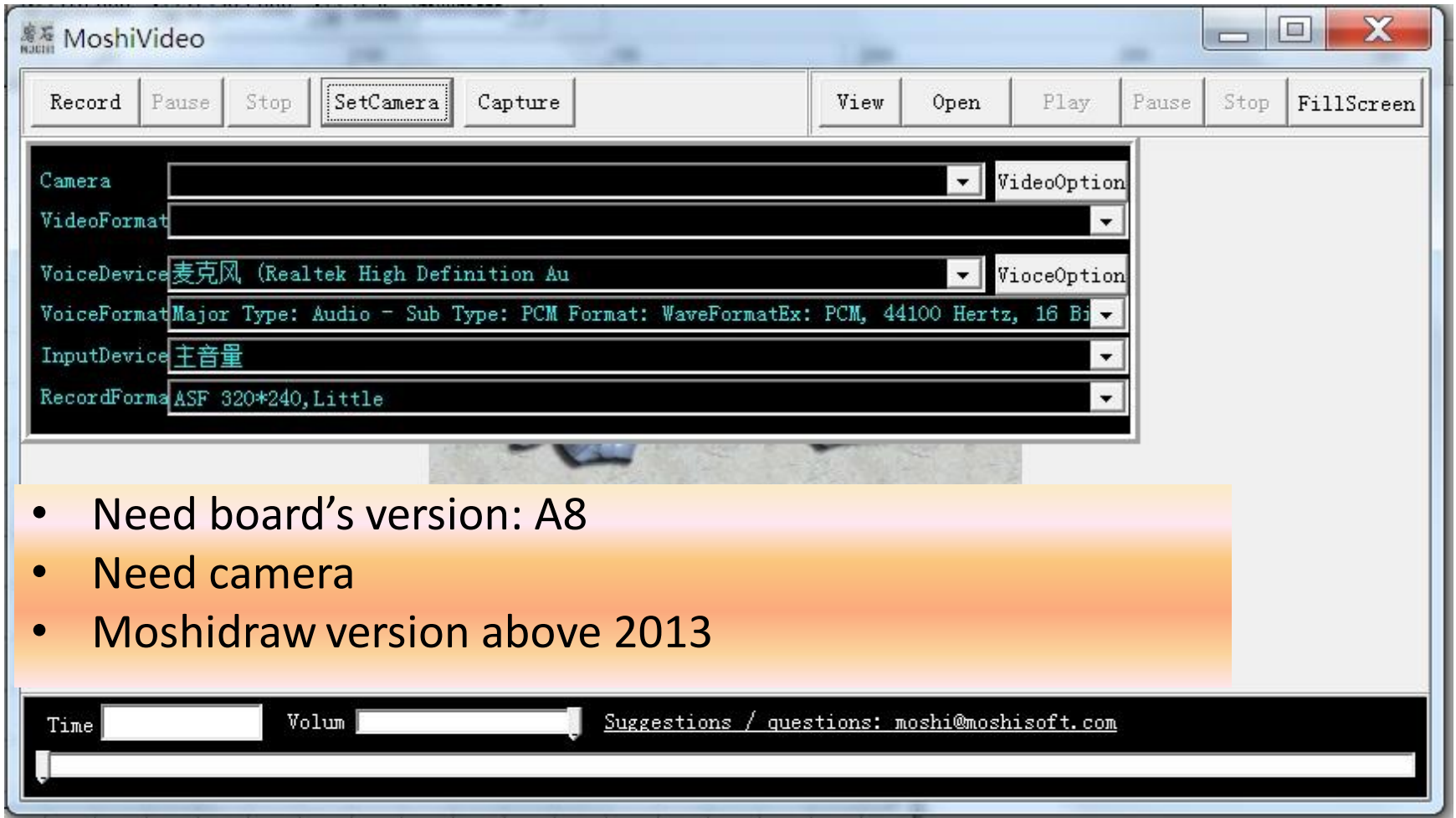
- www.moshidraw.com
- www.moshilaser.com
- www.moshisoft.com
- moshi@moshisoft.com
- laser@moshisoft.com

Insert program to Coreldraw

- LinkCoreldraw



VideoPosition



The screenshot shows the MoshiVideo application window. The title bar reads 'MoshiVideo'. The interface includes a menu bar with options: Record, Pause, Stop, SetCamera, Capture, View, Open, Play, Pause, Stop, and FillScreen. Below the menu bar is a settings panel with the following fields:

- Camera: [Dropdown]
- VideoFormat: [Dropdown]
- VoiceDevice: 麦克风 (Realtek High Definition Au) [Dropdown]
- VoiceFormat: Major Type: Audio - Sub Type: PCM Format: WaveFormatEx: PCM, 44100 Hertz, 16 Bi [Dropdown]
- InputDevice: 主音量 [Dropdown]
- RecordForma: ASF 320*240, Little [Dropdown]

Below the settings panel is a video preview window showing a person's legs. At the bottom of the window is a control bar with 'Time' and 'Volum' sliders, and a text field containing 'Suggestions / questions: moshi@moshisoft.com'.

- Need board's version: A8
- Need camera
- Moshidraw version above 2013

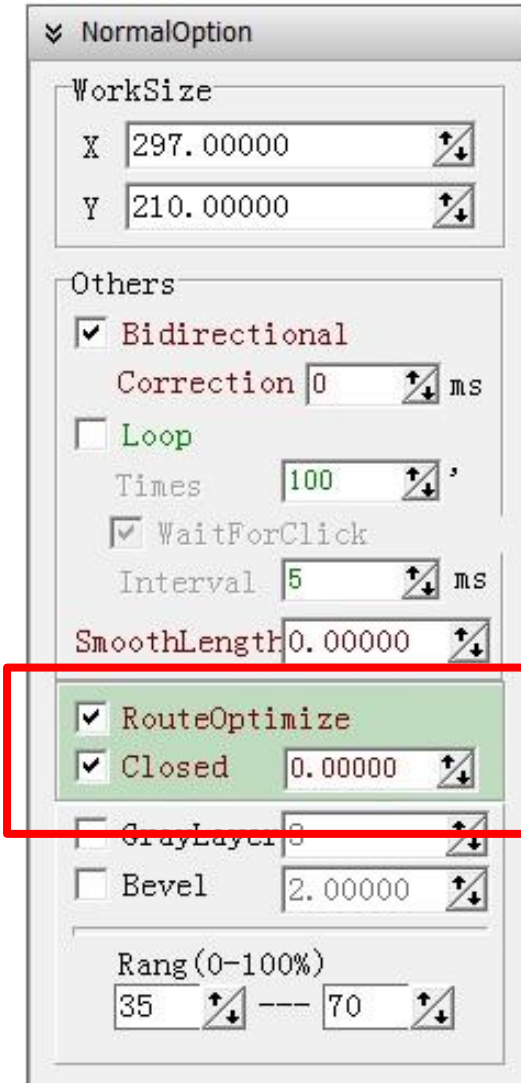
Vertex adsorption

- Current vertex use near vertex's position when paint new shape.
- Its use same position when nearly

AutoClosed

Repeat length x when cut, if the lines is closed.

RouteOptimize: Lines From the inside out



USB signal reconnect

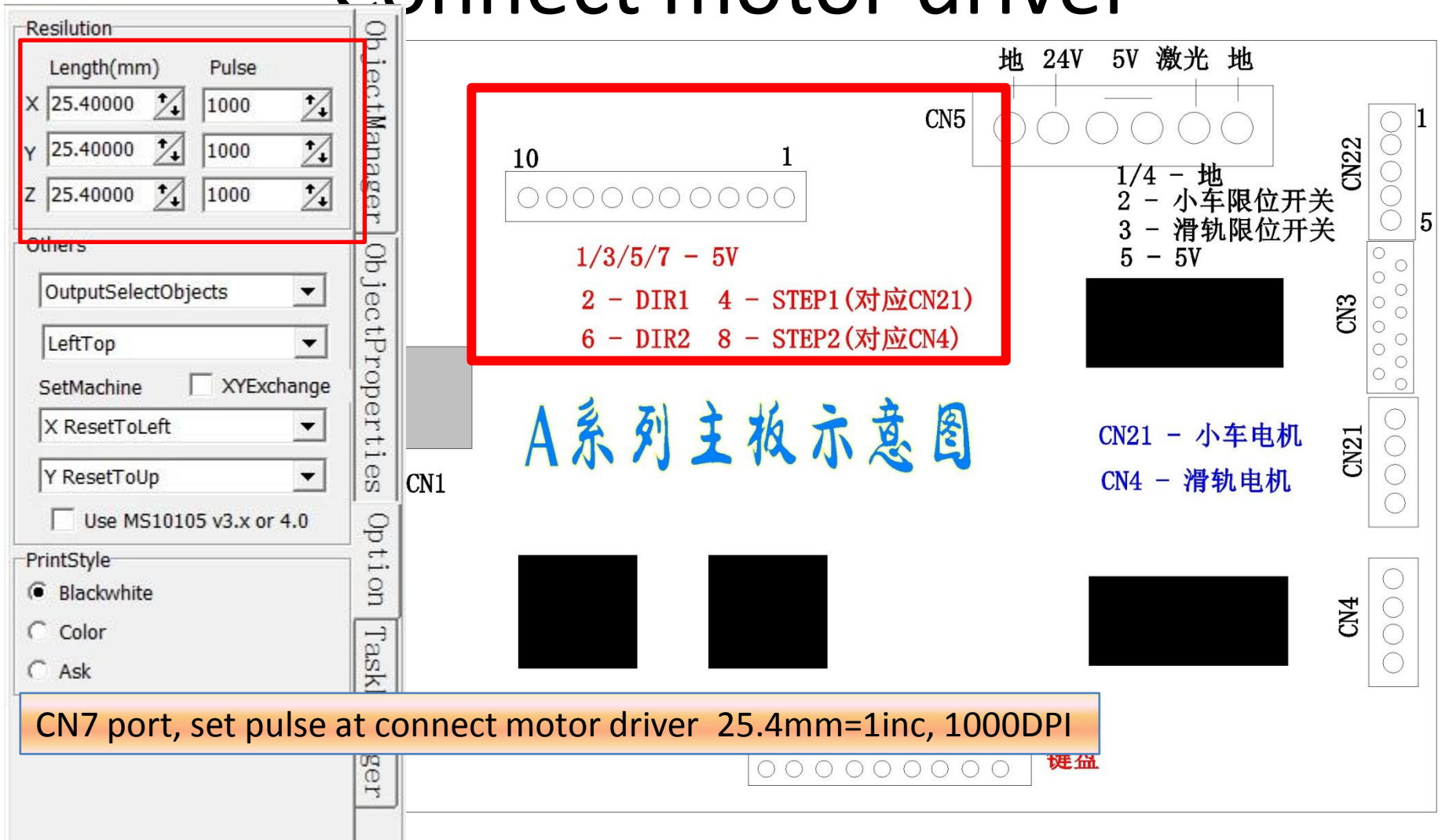
- USE A boards:

The function can use on A boards

Moshidraw version above 2013

- The usb port is rectangle.

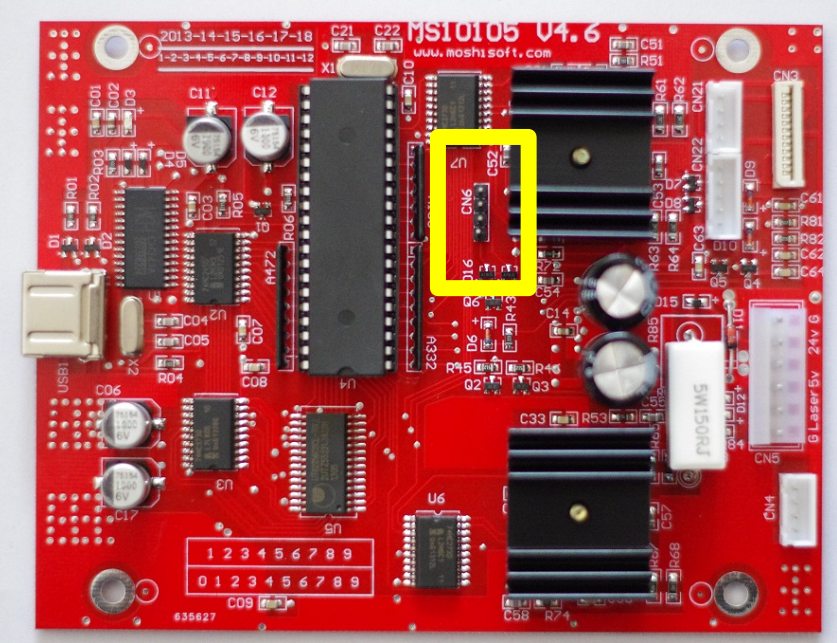
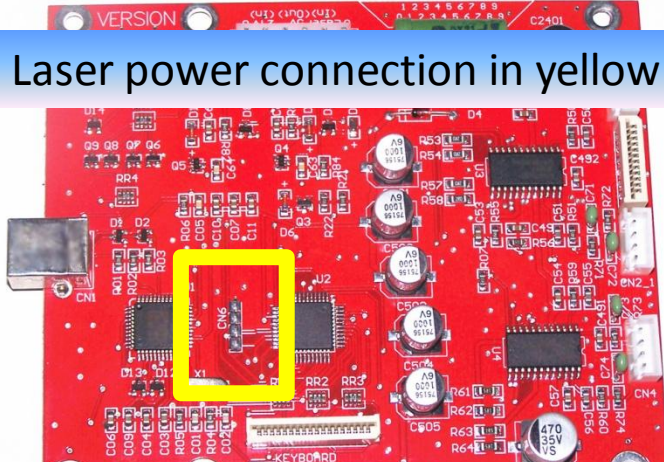
Connect motor driver



CN7 port, set pulse at connect motor driver 25.4mm=1inc, 1000DPI

Laser power

Laser power connection in yellow lines.



常用参数

任务名称	Noname
图层名称	Default
雕刻速度	16 cm/s
扫描功率	0.0 % 测试
切割速度	20 mm/s
切割功率	0.0 % 测试
空行速度	40 mm/s
扫描间隔	3 行/列
定位框	矩形
增加外框	2.00000
雕刻完成	回原点

输出方式

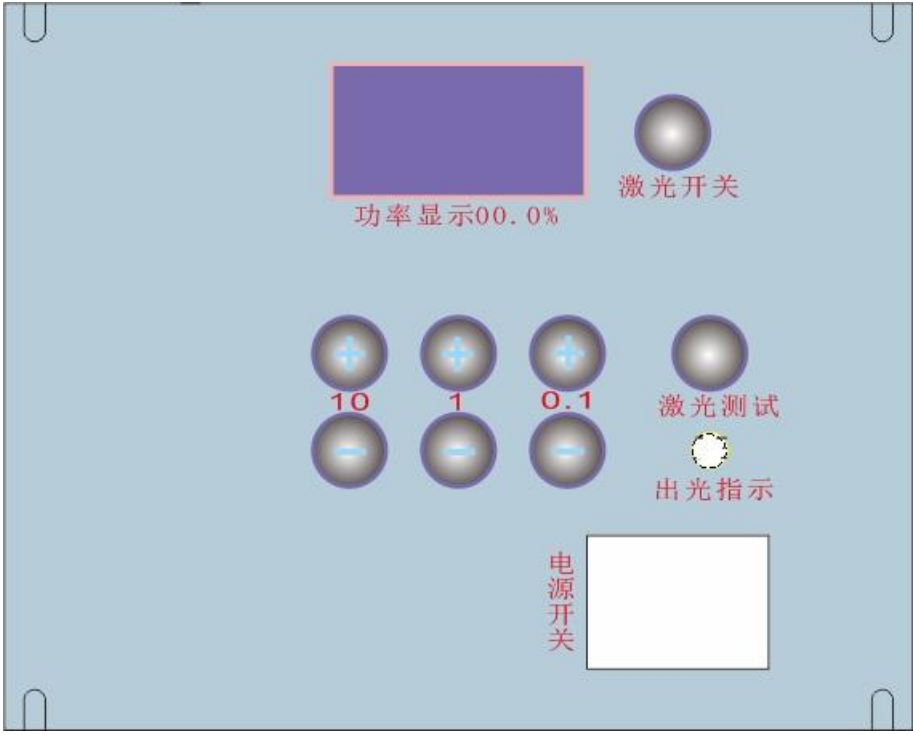
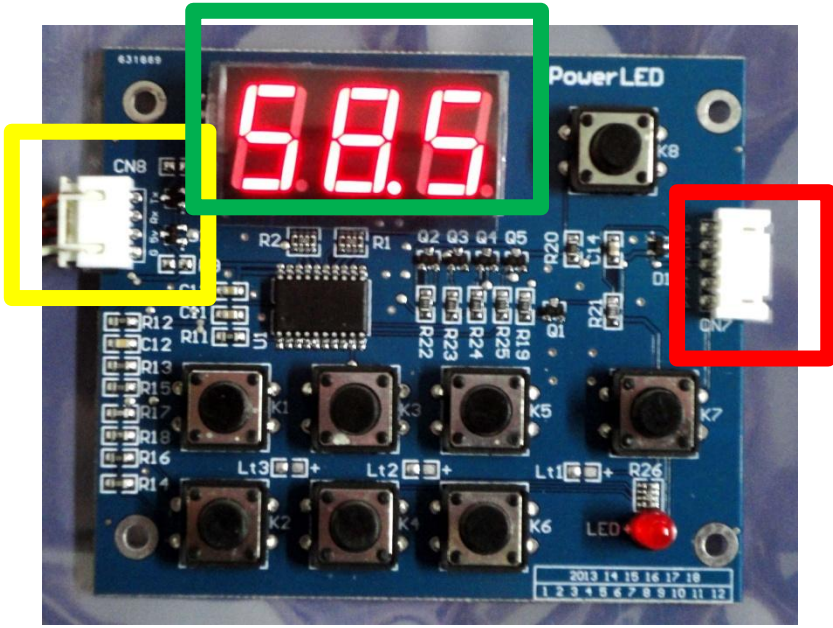
雕刻扫描 切割输出

雕刻方式

垂直左起 水平上起
 垂直右起 水平下起

反字 文字凹下
 正字 文字凸出

PowerLED



- Connect to board in yellow lines
- Connect to laser power in red lines
- Display value(0-100%) in green lines