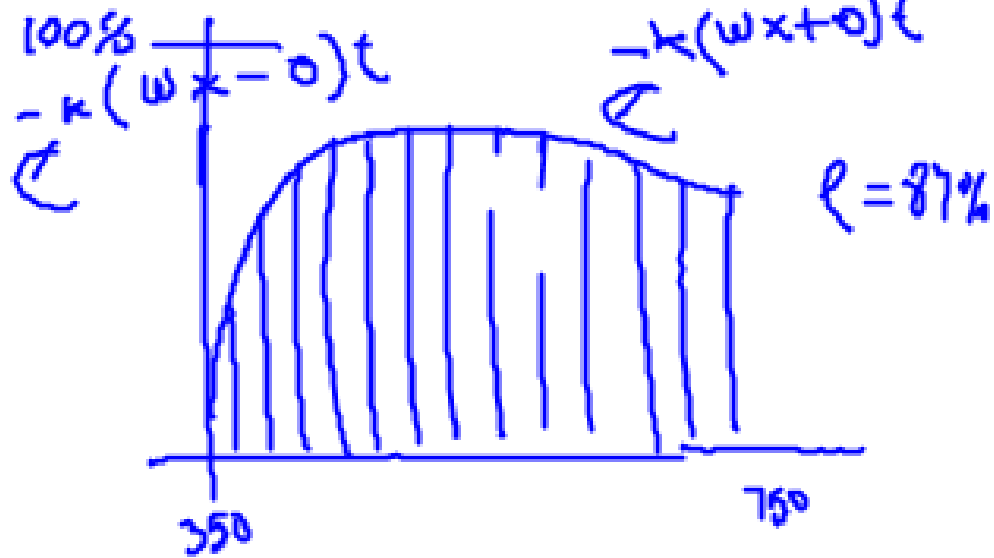
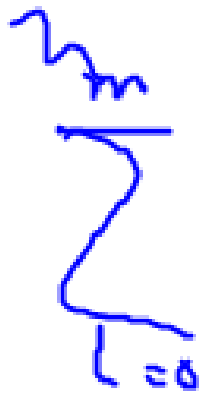
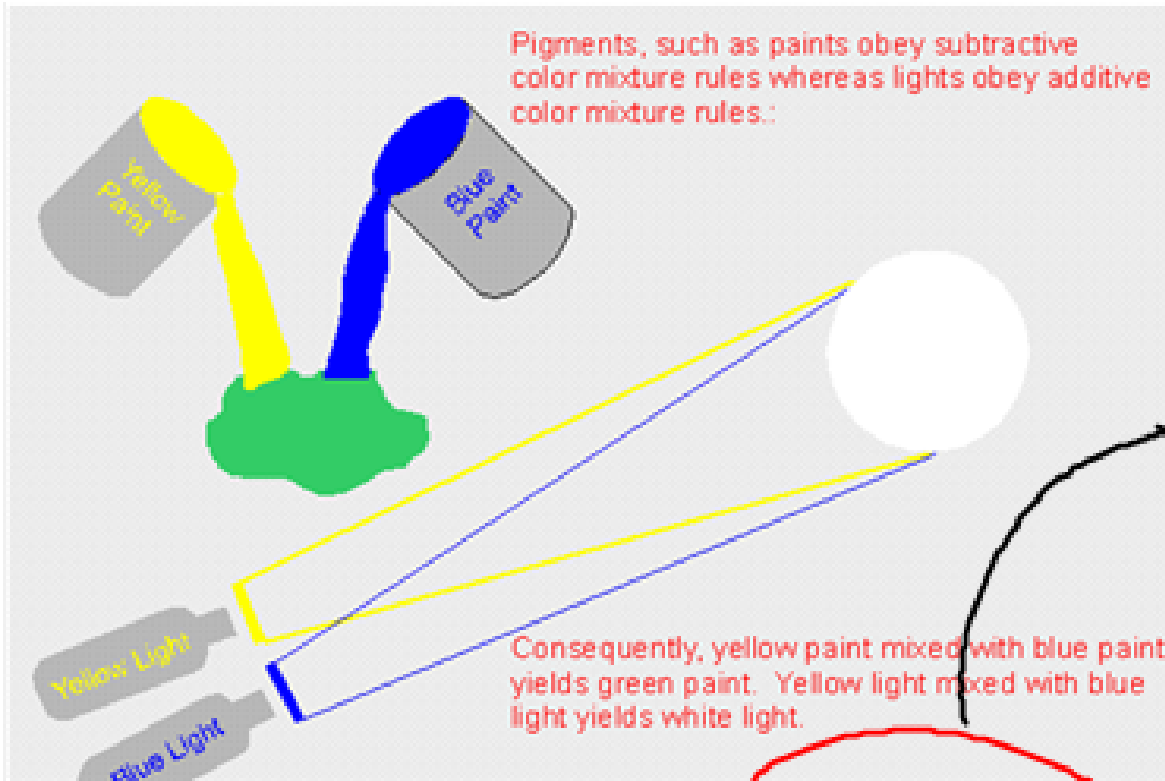




$$P = \frac{\sum R}{\sum I} \times 100$$



- $f(x)$
- $f(x+a)$
- $f(x-a)$
- $f(ax)$
- $a f(x)$



## Sistema aditivo

- Fuente de Luz
- 3 colores primarios RGB
- Colores matriciales independientes

$$R \stackrel{A}{=} G + B \quad \text{NO ES POSIBLE}$$

R+G+B

## Substrativo

- pinturas
- 3 colores primarios FMC

Color Cualquiera

+ signification mayor F+MC